



WIDER OPENING OF SCHOOLS (PRIMARY)

Staying Safe → Staying Apart

FREQUENTLY ASKED QUESTIONS

WILL MY CHILD GET THE SAME WORK SENT HOME IF THEY DO NOT COME TO SCHOOL?

Yes. Our plan is to stick to the same style of planning that we are currently using both in school and at home – not only do we want everyone to still feel like they are doing the same within each cohort it is also not realistic to expect teachers to plan two different weeks of work.

HOW WILL THE GROUPS OF CHILDREN BE SELECTED?

This will very much depend on how many children return to school. There are many possibilities and ramifications that we will plan out for each scenario. We will try to balance that out with friendships where we can however this cannot be fully guaranteed.

CAN I SEND SIBLINGS IN ALSO?

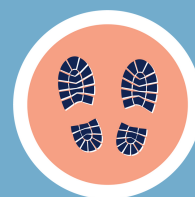
No – we are really sorry but this will not be possible unless they are in the Year Groups that are returning. The staffing levels we need to keep everyone safe means there simply isn't the capacity to safely accept any other children.

HOW WILL SOCIAL DISTANCING WORK IN CLASSROOMS?

In short, it won't in EYFS and Y1. We will be cleaning regularly, being careful with resources and ensuring the children keep to the strict hygiene standards. However we will not be enforcing strict social distancing with these year groups as we fear that it could cause far more emotional and mental damage than anything else. We will be doing our utmost to keep it as safe as possible but anyone who thinks social distancing can be enforced in these age groups has never spent much time with them!
The same small group will be with each other at all times, and not mixing with other groups.

HOW WILL BREAK AND LUNCHES WORK?

The same group 'bubble' will be with each other at all times, and they will not mix with other bubbles. The different bubbles will not mix on the school site. School dinners will be served as pack ups and brought to the children in the classroom.



WILL SCHOOL HOURS REMAIN THE SAME FOR ALL YEAR GROUPS?

On the whole, yes. We may need to stagger slightly opening and closing time for some year groups should we have many children to ensure safe arrival and departure of all parents as well.



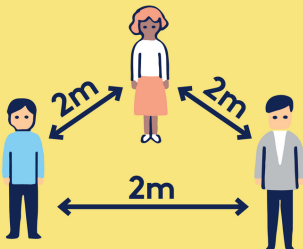
DON'T FORGET:



**Catch it, bin it,
kill it**



Keep areas clean



Keep 2m apart



**Don't forget to
wash your hands**

IF I DECIDE NOT TO SEND MY CHILD TO SCHOOL WILL I BE FINED?

In short, no you won't be fined by the school or the Local Authority. We fully understand parental concerns at this time and hope that before too long everyone will feel reassured and schools can return to normal. In the meantime, our arrangements to help you support your child with home learning will continue.

HOW WILL SCHOOL DEAL WITH ANY INSTANCES OF CHILDREN THAT REFUSE OR ARE UNABLE TO SOCIALLY DISTANCE?

We will be teaching children the rules of this school experience – it will be different to normal school and most of our children will understand this. If there are incidents that cause safety risks to others, then this would be something we would work with parents to resolve if all children were to remain in the school.

HOW WILL CHILDREN THAT REQUIRE ADDITIONAL SUPPORT RECEIVE IT FROM A 2 METRE DISTANCE?

With the smaller groups we are anticipating, it will be easy to help and support children in school. The focus will be on supporting them but also the curriculum will not be taught in the same way.

OTHER SCHOOLS ARE ALLOWING YEAR 6 TO COME INTO SCHOOL, WHY IS MY YEAR 6 CHILD NOT INCLUDED?

We have been asked by the Government to make younger children a priority in expanding our provision post 'lockdown'. In doing this and considering the size of our schools and the staffing available to take care of these younger children safely, Year 6 are not included in the first instance. We will aim to make some provision for Year 6 children to come into school to bring about some closure to their time at Primary school and say goodbye to staff etc. We would hope that this would be able to take place in July.

IS THERE A PROTOCOL IN PLACE FOR IF A PUPIL, STAFF MEMBER OR HOUSEHOLD HAS SYMPTOMS OR RECEIVES A POSITIVE TEST FOR COVID-19?

if a child or anyone else within the household develops symptoms, they must not come to school and the school will be notified immediately. Further to this, our understanding of test, trace & isolate means that it is likely that other children in the 'bubble' including the teacher, may have to self-isolate

WILL TEACHERS AND/OR CHILDREN WEAR PPE?

In the government guidance it is not expected that the school community will wear face masks. Not only could it be intimidating for young children, we also have to consider the conveyance of voice and facial expressions that are crucial to a school environment. Staff members will endeavour at all times to not get too close to children and keep surfaces clean, maintain good hygiene procedures and teach children the rules. If a child needs personal assistance, gloves and aprons will be used.

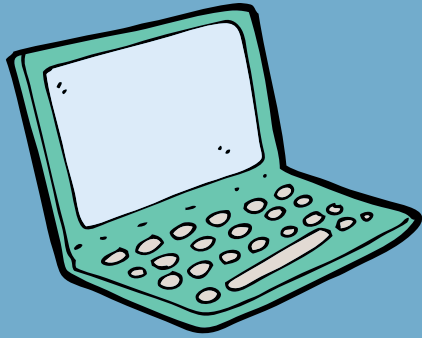
Staying Safe → Staying Apart



Staying Safe → Staying Apart



FREQUENTLY ASKED QUESTIONS ABOUT I.T.



WHAT DO WE USE TO DO WORK AT HOME?

To do work at home, you will be instructed by your teacher. Some work is issued on SeeSaw or weekly padlets or on your school website.



HOW DO I LOGIN?

If you have any questions regarding SeeSaw please refer to SeeSaw's help & guidance or contact the school for assistance in the first instance: <https://tinyurl.com/ya49jbhq>. Similarly for problems with padlets or the school website contact your school for assistance in the first instance.

WILL THE IT EQUIPMENT IN SCHOOL BE SAFE TO USE?

The most used IT equipment on site will be the interactive boards which are an amazing resource.

These will be cleaned to the same high standard as all other areas around the school and anyone using them will ensure they have clean hands.

